



**SOUTHERN
ENCOUNTER**

AQUARIUM & KIWI HOUSE

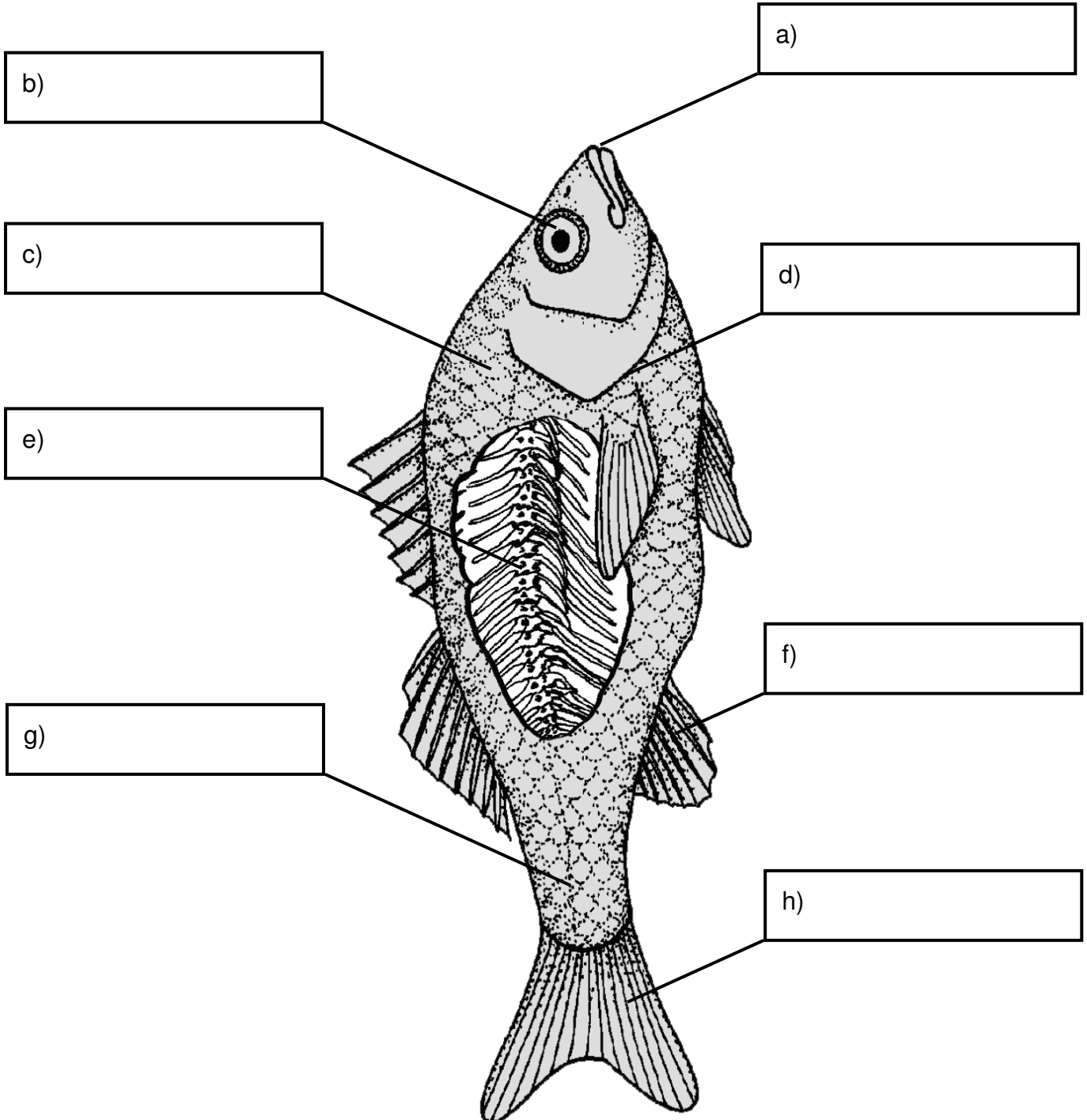
**Southern Encounter
Aquarium and Kiwi House**
Cathedral Square West
P.O. Box 5130
Christchurch
New Zealand

Telephone: 03 377 3474
Fax: 03 377 9196
Email: educ@southernencounter.co.nz
Website: www.southernencounter.co.nz

THE PARTS OF A FISH

Living in the water is very different to living on the land. Water is much harder for an animal to move through than air but it also makes it easier for animals to hold themselves up as they 'float' just a little. Water animals also breathe water rather than air which is very different to us:

1. Fill in the boxes below to label the different parts of a fish:



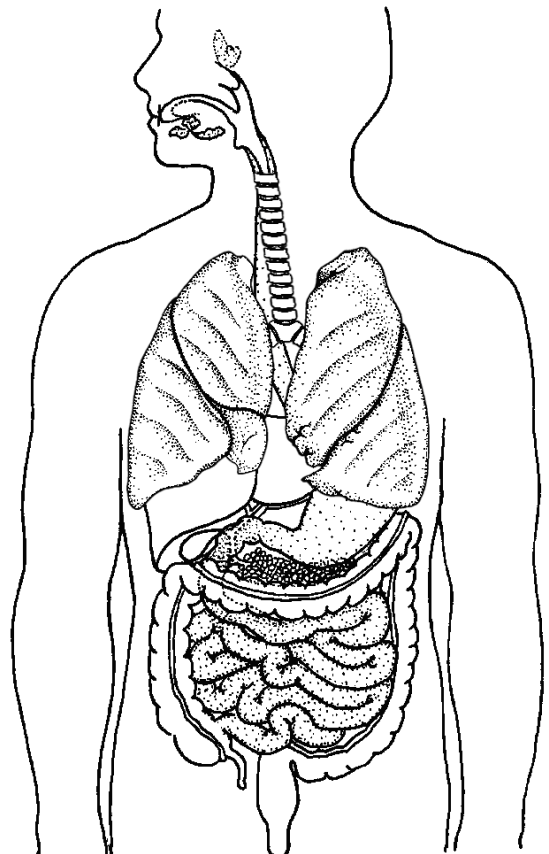
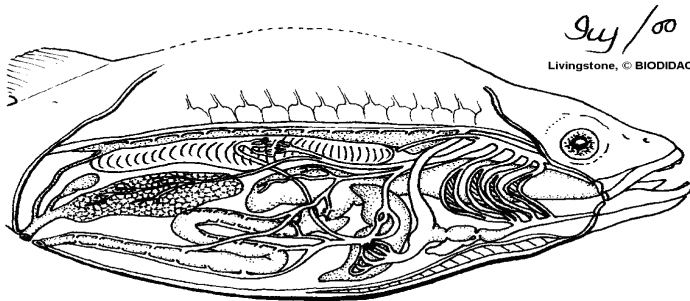
THE PARTS OF A FISH

Every part of a fish's body has its own special job to do so that the fish can live. We have many of these parts in our own body that do the same job as in a fish...but some of these parts are only found in fish!

2. Draw a line to join the name of the body part of a fish to the description of what it does:

Body part	What it does
a) Mouth	Like a long line of extra ears to hear underwater
b) Eyes	Used to turn left, right, up or down
c) Scales	Eat food and breathe in water
d) Gills	Make a tough layer on the outside of the fish
e) Backbone	Wiggles to make the fish move
f) Fins	Holds a fish together and gives it shape
g) Lateral Line	Get the oxygen out of the water
h) Tail	Look for food, other fish and where it is going

3. Tick each body part listed below to show whether it is found in a fish, or a person, or both:



Body part	Found in fish	Found in people
a) Skin		
b) Scales		
c) Hands		
d) Fins		
e) Legs		
f) Tail		
g) Lungs		
h) Gills		
i) Mouth		
j) Stomach		
k) Eyes		
l) Ears		
m) Brain		
n) Heart		