



ADAPTATIONS TO THE ROCKY SHORE

The animals that live on the rocky shore live in a very harsh environment. Twice every day they are left exposed to the air as the tide goes out; waves pound them on the rocks; rain floods them with fresh water. The animals that live on the rocky shore must have many special features to help them survive. The special features that animals have to help them survive within their environment are called *adaptations*.



Chiton

1. Chiton adaptations:



Hermit Crab

2. Hermit Crab adaptations:



Sea Anemone

3. Sea Anemone adaptations:



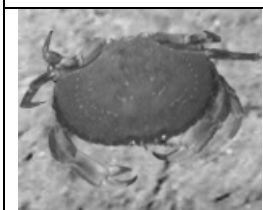
Cat's-eye

4. Cat's-eye adaptations:



Cushion Star

5. Cushion Star adaptations:



Cancer Crab

6. Cancer Crab adaptations:
