

The curved windows on many of the tanks in the aquarium are not made of glass but are in fact 40 mm thick acrylic.

The aquarium has an annual electrical energy usage of over 800,000KWH's.

There is roughly 1 milligram of gold dissolved in every ton of seawater!

The power bill for the aquarium is over \$5,000 per month

Construction of the aquarium cost more than \$5 million.

We have our own generator to provide electricity should there be a power cut, just to make sure we keep the fish alive.

The Aquarium has an alarm system (of course) but it tells us not only if someone has broken in but also if any essential equipment has been broken or is damaged.

Including its education programmes, the Aquarium, is run by a permanent staff of just five people!

www.southernencounter.co.nz

Email: educ@southernencounter.co.nz

Fax: (03) 377 9196

Telephone: (03) 377 3474

New Zealand

Christchurch

Papanui

P.O. Box 5130

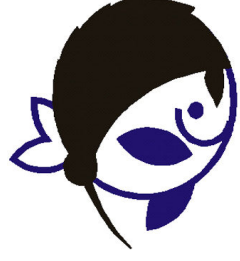
S.E.A. School - An ocean of learning!

Did 11

you

know?

Our Aquarium

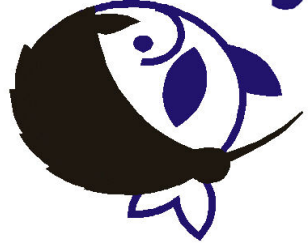


**SOUTHERN
ENCOUNTER**

AQUARIUM & KIWI HOUSE

**AQUARIUM
&
KIWI HOUSE**

**SOUTHERN
ENCOUNTER**



The main viewing window of the main marine tank is made of three layers of 19mm tempered glass, separated by silicon “bonding” layers, to give a total thickness of ~60mm.

All the glass and pumps for the tanks were specially imported from England.

The eel tank holds 21,216 litres of fresh water.

The rarest fish we have placed on display was a short-jawed kokopu.

The aquarium opened in September 1997—but without the kiwi house.

Our seawater reserve holds 18,000 litres in storage tanks in the basement for use in cleaning and water changes.

The rockwork in the aquarium was made from urethane by the same people that built many of the sets for the Xena and Hercules television series.

Kiwi were added to the many species on display in a purpose built enclosure in 2001.

To raise alkalinity in the main marine tank we sometimes add more than 10kg of baking soda (sodium bicarbonate) at a time.

The mass of distilled water is 1.00kg per litre, seawater has a mass of 1.03kg per litre due largely to dissolved salts.

The flatfish tank holds 21,000 litres.

135 cubic metres of air is pumped through the tanks every hour by a single blower unit.

The main marine tank holds 85,000 litres of seawater—that’s over 87 tonnes, or more than 140,000 milk bottles full!

Although displays are constantly being changed we have around 900 animals from 135 species.

Christchurch is one of the few cities in the world where water for the aquarium can be taken directly from the mains supply without requiring treatment.

The coarse fish tank holds 6,618 litres.

24,000 litres of seawater is trucked in to the aquarium from Scarborough every 4-6 weeks.

The aquarium is built with “100% failsafe”, meaning that structures (such as the glass in the tanks) are built to withstand twice as much load as they are normally subjected to.

Excluding the main marine tank, the large tanks all have double layered glass

The waterfall drops 475,200 litres per day into the eel tank!

Sharks, rays and many of the bony fish are released again after being displayed for a short period.

The biggest fish we have had on display was a seven-gill shark of 1.8 metres length.

30kW of energy is used in powering the lighting alone!

Each of the three panels of glass in the main marine tank weighs 750 kg!